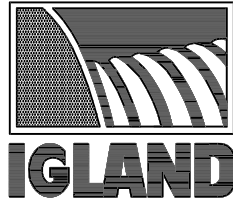


IGLAND Standard Parts Catalogue



Winch Head (for Fixed Mounting)

Serial No.: 001 →

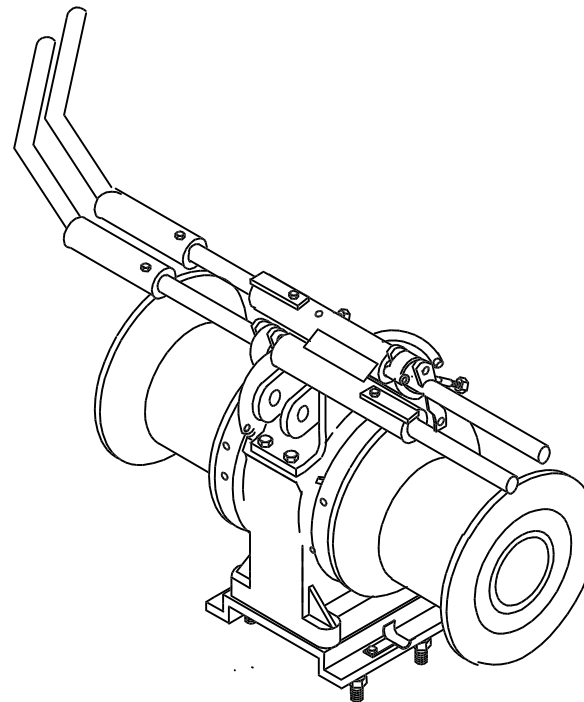
GENERAL INFO

This Parts Catalogue supersedes Parts List No. : 1313

This Parts Catalogue consists of 6 numbered pages.

This Catalogue: P/N 390277

N/A = Not available

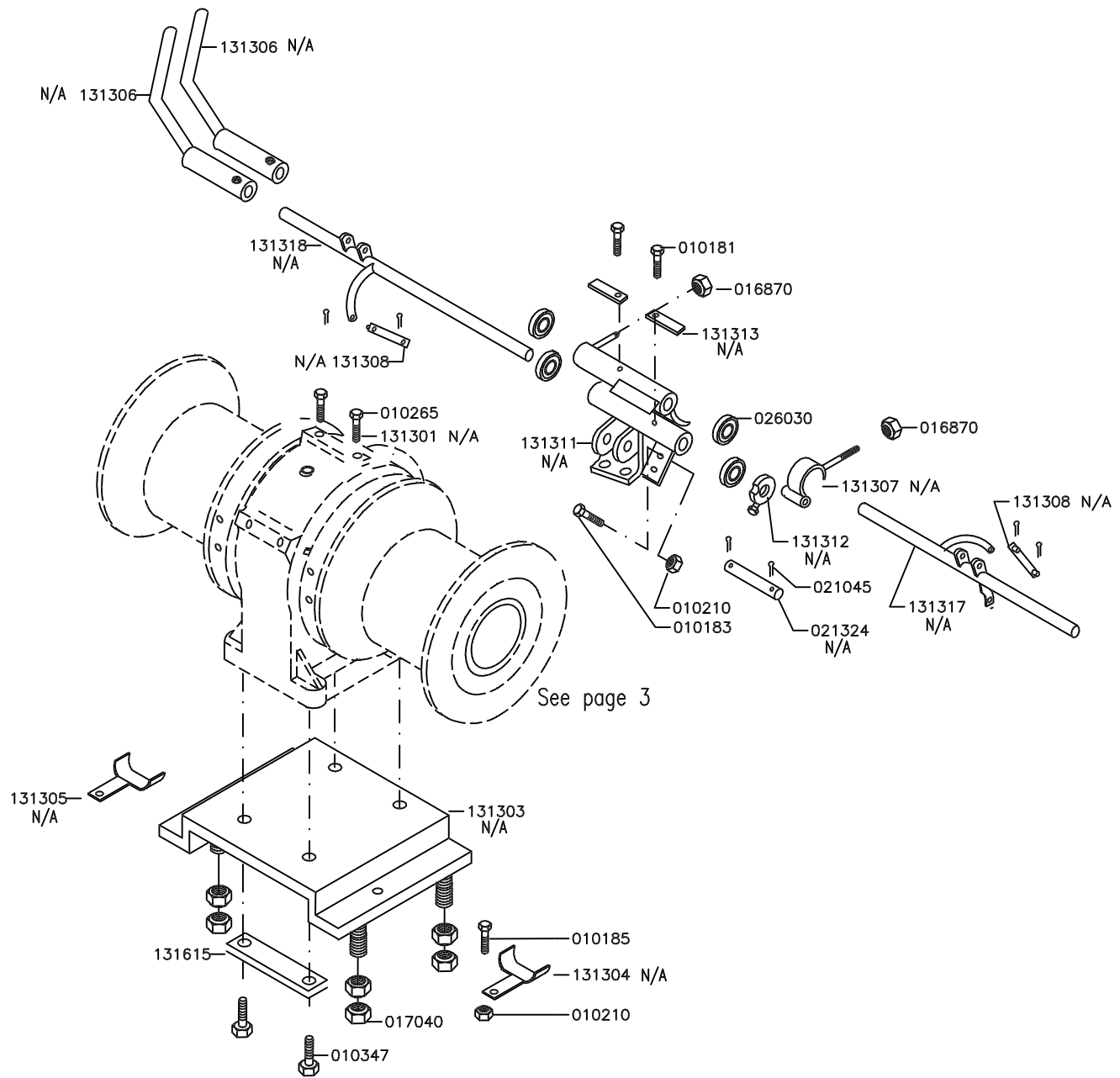
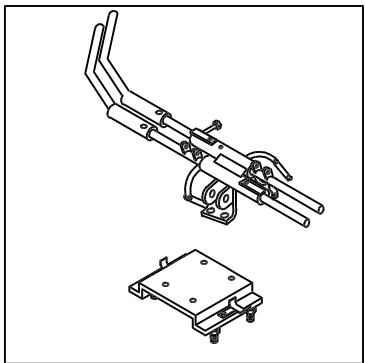


See page 2

Approved:	Revised: T.K. 07.11.01
	Issued: AIS 12.02.97

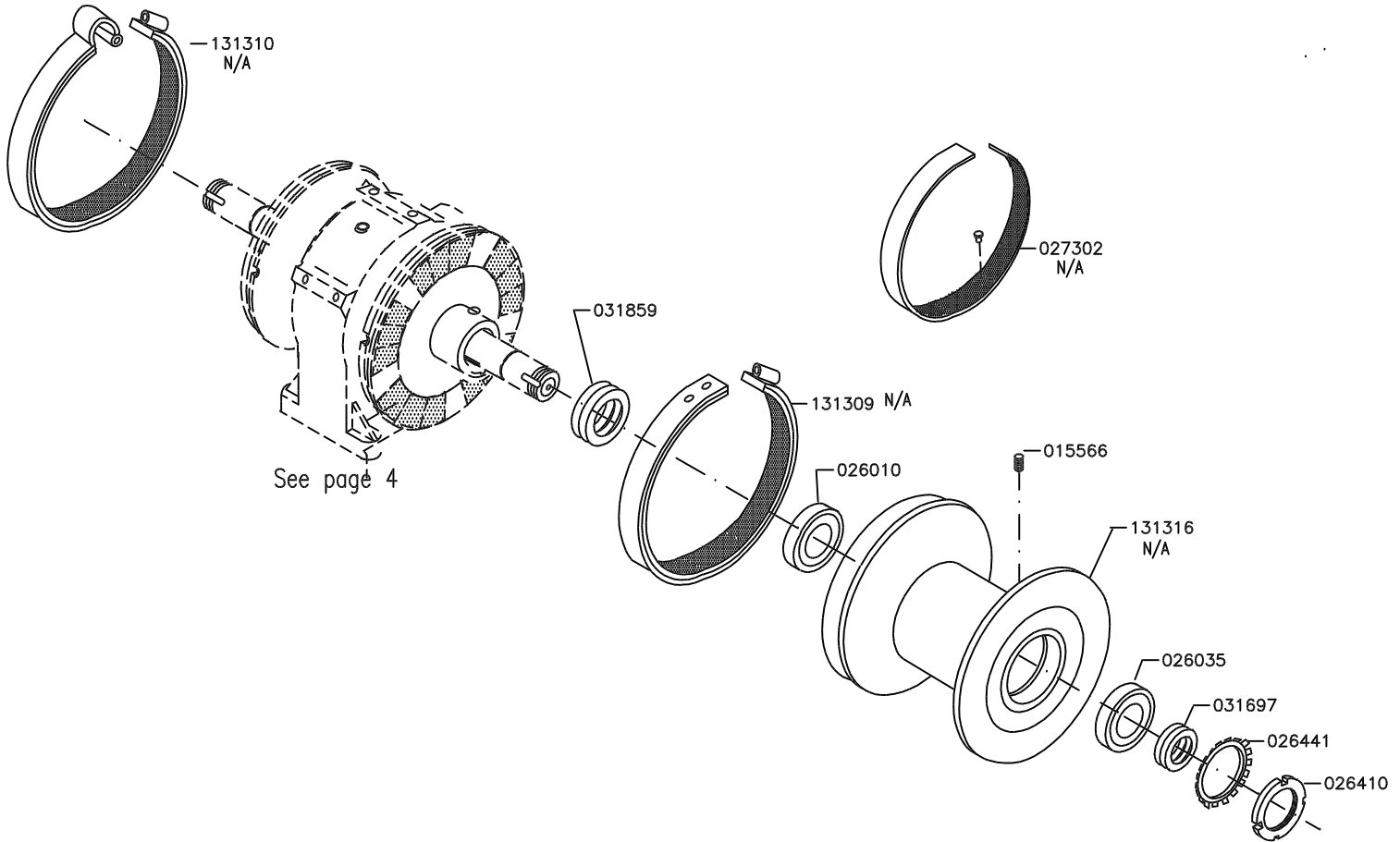
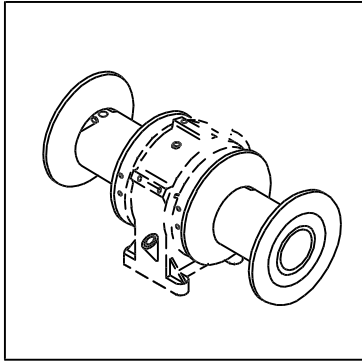
IGLAND Standard

”HEAD”



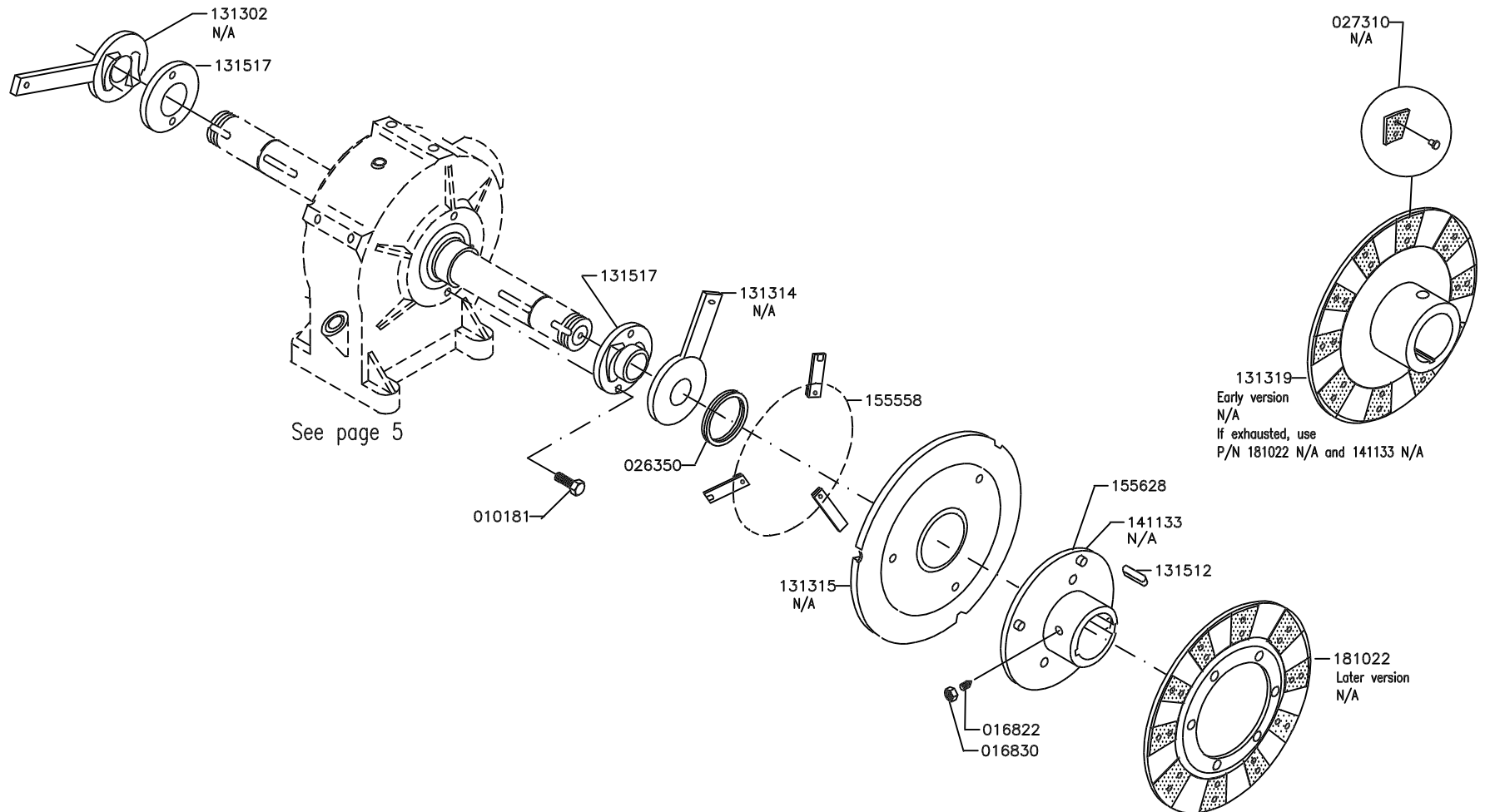
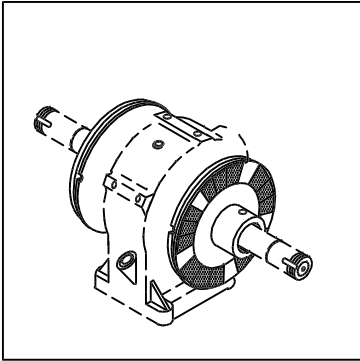
IGLAND Standard

"HEAD"

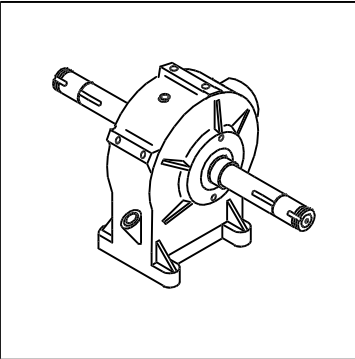


IGLAND Standard

CLUTCH



IGLAND Standard



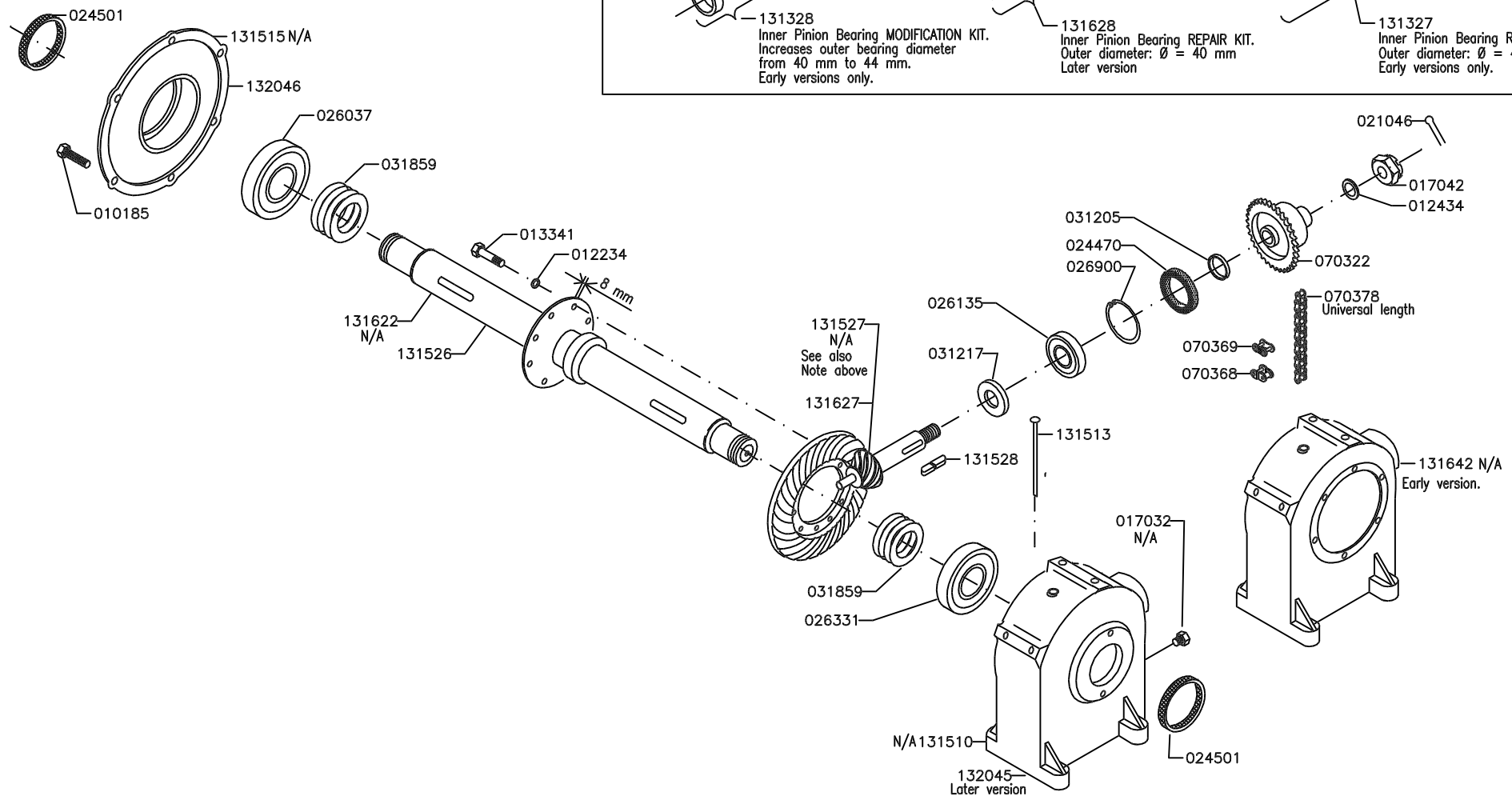
”HEAD”

NOTE:
 Inner Pinion Bearing MODIFICATION KIT/REPAIR KITS
 See Fitting Instructions in Workshop Manual.

131328
 Inner Pinion Bearing MODIFICATION KIT.
 Increases outer bearing diameter
 from 40 mm to 44 mm.
 Early versions only.

131628
 Inner Pinion Bearing REPAIR KIT.
 Outer diameter: $\varnothing = 40$ mm
 Later version

131327
 Inner Pinion Bearing REPAIR KIT.
 Outer diameter: $\varnothing = 44$ mm.
 Early versions only.



Intentionally blank